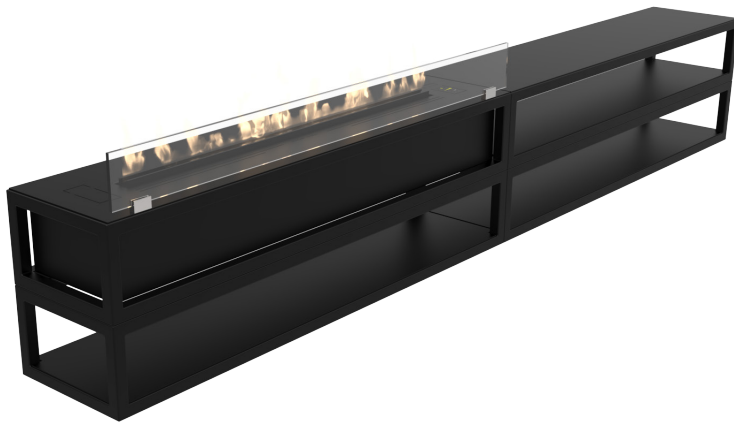


TORINO MULTI™



Torino multi bioethanol fireplace has been designed as a hang-on-the-wall piece of furniture with clean and minimalistic lines that incorporates the automatic Denver Basic burner.

The fireplace is easy to install as it can be simply hanged anywhere in the house, adding extra shelf space and sharpness to an interior.

Moreover, it has never been easier to operate a fireplace as the burner can be controlled automatically via Decoflame App or a remote controller.

STANDARD FINISH

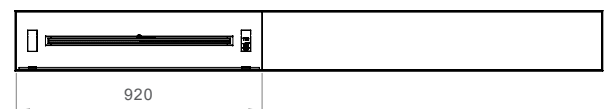
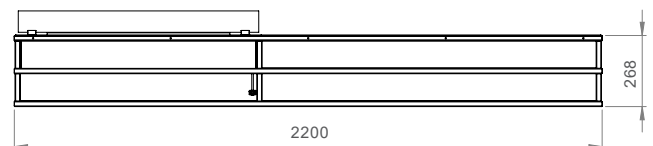
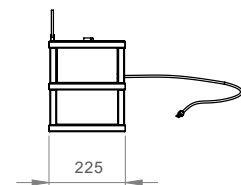


TECHNICAL INFORMATION

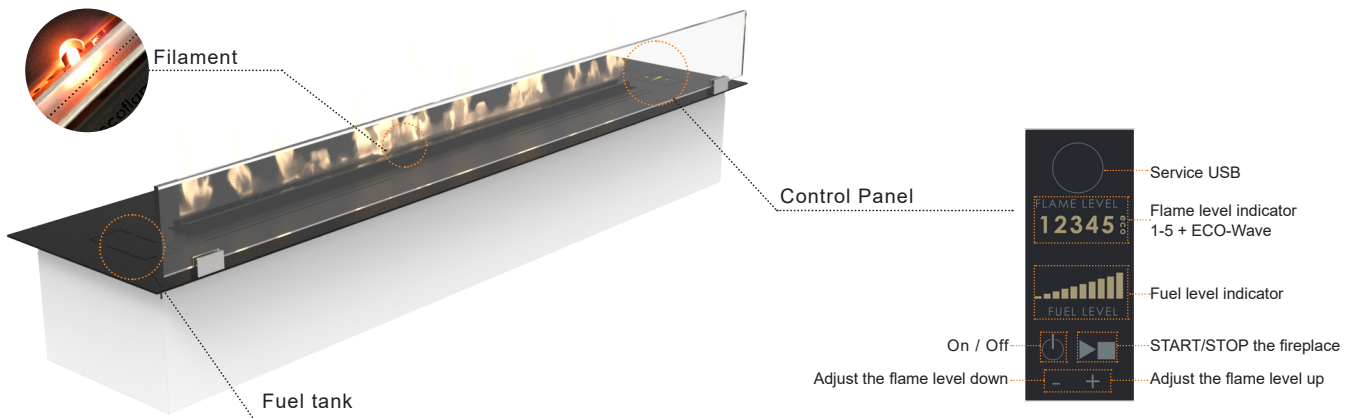
Capacity:	5,8L
Flame tray:	700mm (920 Denver e-Ribbon Basic burner)
Burning time:	Around 7,5 - 20,8 hours <i>Depending on flame intensity and air flow</i>
Fuel consumption:	0,4 – 0,8 l/h
Heat output:	1,6 - 4,3 kW/h
Min. room size:	89m ³
Power supply:	220V – 240V – 50 Hz
Net weight:	46kg
Burner:	Automatic Denver Basic Burner
Materials:	Frame: Steel pipes Topplate: Steel 80mm high hardened glass
Finish frame:	Powder coated black or white Optional finish (RAL) on request
Topplate finish:	Black or white
Fuel:	Bioethanol at 96,5 - 97,5%

FEATURES

- No chimney required
- No smoke, ash or soot
- Denver e-Ribbon™ Basic technology
- Fuel and flame level indicator
- Bluetooth / App and 5 flame levels and Eco Wave
- Safety sensors and safety chamber



DENVER E-RIBBON BASIC BURNER



Operating:

Step 1	Turn on the electronics of your Denver e-Ribbon Basic™ by pressing the button.
Step 2	Fill in the right amount of bioethanol in the fuel tank by verifying the level on the fuel level indicator.
Step 3	To ignition the fireplace. Press the button on the control panel. After about 3 minutes, the first flames will appear around the centre of the flame tray.
Step 4	When the filament is no longer red (approx. 10 min) it is possible to adjust the flames.
Step 5	To switch off the fire at any time – also during the warming-up phase – press the button on the control panel. The flames will disappear within a few minutes.



Use the supplied remote control or download the Decoflame App to your mobile device for controlling the biofireplace.

Installation of Decoflame App to the Denver e-Ribbon Basic burner

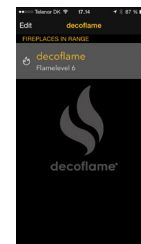


App Store



Google play

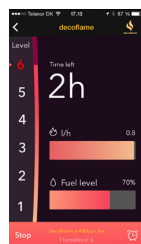
Model:	Denver Basic 720 - black	
Dimensions:	720x215x125mm - Flame Tray 500	
Power Supply:	220/240V - 50Hz must be earthed	
Serial Number:	7200005.16.V1.001	
Thermal Output:	max 2.9 kW	
Fuel Type:	bioethanol 96%	
Room Volume:	min. 58 m ³	
Radio Frequency:	433.92 MHz	
Bluetooth Code:	0001	
Manufacturer:	Decoflame ApS - Made in Denmark	



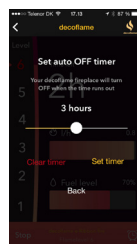
1. Download and install the Decoflame App corresponding to your smart device's operating system. For more information go to: decoflame.com.

2. In order to pair your fireplace with your smart device, start the fireplace by pressing the 'ON' button.
Start the App and choose your fireplace. Insert the code from YOUR rating plate, like the one highlighted above.

3. Once your device is paired, the fireplace should be visible on the app. You are now able to change the name of the fireplace.
Note: You are able to pair more than one fireplace like described in the step nr. 2 and give them different names.



4. Once you have selected your fireplace, you can turn it on by pressing 'START'. If the fireplace has already been turned on using the control panel, you can now monitor the fuel level and the consumption.



5. For the 'Turn Off Timer' press the clock icon in the lower right corner. To adjust the remaining time, slide the dot to the left and right and select 'SET TIMER'. The remaining burning time can be changed by repeating the above mentioned steps. To cancel the timer select 'CLEAR TIMER'.



6. For adjusting the flame intensity, select the desired level on the left side of the screen. (1-lowest, 6-highest)
Should there not be enough fuel for the selected burning time - the fireplace will shut down automatically.
Select 'STOP' to turn off the fireplace.